

considering the commonplace

prairie towns
through the lens of
Bob Regier

*Attention to the commonplace,
the micro as well as the macro,
the hidden and the revealed,
can transform a place into
an inexhaustible reservoir of
discoveries and feats
for the mind and the senses.*

BOB REGIER



North Newton



Peabody

Space Requirements: 1000 sq/ft

Exhibit Fee: \$2,500 shipping included.

Installation Assistance: One staff person arrives with the exhibit to assist host venue with installation.

Environment and Security: Host venue to assure a museum quality exhibit environment, with stable temperature and humidity, appropriate light levels and adequate security.



Regier travels with his camera, recently updated from slides to digital, and turns his eye to photographing the ordinary yet visually engaging patterns of the prairie and built environment.

Sixty-six photographs from Regier's recent travels are the core of the new special exhibition, displayed in a custom-designed traveling exhibit system with five large photomural banners.

This program is presented in part by the **Kansas Arts Commission**, a state agency, and the National Endowment for the Arts, a federal agency, which believes that a great nation deserves great art.

KANSAS
ARTS COMMISSION



Kauffman Museum, Bethel College, 300 East 27th Street, North Newton, KS 67117
kauffmanmuseum.org 316.283.1612

considering the commonplace

prairie towns
through the lens of
Bob Regier



For twenty years, artist/teacher Bob Regier of North Newton, Kansas, has traveled the mainstreets and backroads of Kansas with his wife Vernetta and friends Keith and Aldine Sprunger. The foursome annually spends three days exploring a quadrant of the Sunflower State and shares an enduring affection for small towns on the Kansas prairie.

Regier travels with his camera, recently updated from slides to digital, and turns his eye to photographing the ordinary yet visually engaging patterns of the prairie and built environment. Seventy-one photographs from Regier's recent travels are the core of the new special exhibition *Considering the Commonplace* at Kauffman Museum, on the Bethel College campus in North Newton, Kansas. *Considering the Commonplace* will be on display April 26-May 28, and again July 19-October 4.

Exhibition Concept

Considering the Commonplace: Prairie Towns Through the Lens of Bob Regier is organized around eight themes: elegance, entrances, light & shadow, locomotion, sacred space, sentinels, signs & lines, windows & walls. The themes are grouped in an installation designed by Kauffman Museum's curator of exhibits Chuck Regier. Together the two Regiers, who are not related, created an immersive environment that encourages exploration and reflection. The exhibition includes notable quotes found by Bob Regier that share his affection and appreciation for the ordinary. The freestanding exhibit modules were designed to travel to other museums and galleries.

Bob Regier

Regier studied at the School of the Chicago Art Institute and holds the master of fine arts degree in painting and printmaking from the University of Illinois. He retired from Bethel College in North Newton, Kansas, after teaching art for 32 years. Regier's primary studio interest has been printmaking, preferably monotypes, and he also has actively pursued graphic design and photography. Since 1985 he has been part of the Kauffman Museum exhibit team, winning numerous awards for exhibit and graphic design. You can learn more about Regier and his artwork at BobRegier.com

Exhibition on Tour

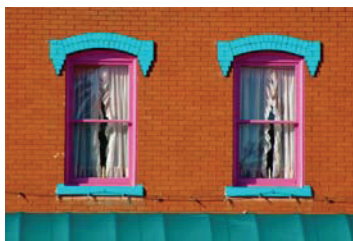
Considering the Commonplace is available to travel. For information on scheduling, contact Chuck Regier, Curator of Exhibits at Kauffman Museum • crregier@bethelks.edu



Dwight



Cottonwood Falls



Garnet